

GENERAL NOTES:

1. CONTRACTOR SHALL HAVE A CURRENT SET OF CONSTRUCTION PLANS STAMPED BY THE ENGINEER WITH AN APPROVAL STAMP BY THE CITY AT THE WORKSITE.
2. ALL CONSTRUCTION SHALL CONFORM TO THE 2020 IDAHO STANDARDS FOR PUBLIC WORKS CONSTRUCTION, THE CITY OF KIMBERLY AND ALL OTHER LOCAL, STATE AND FEDERAL AGENCIES WHICH ARE APPLICABLE UNLESS OTHERWISE SHOWN. THE CONTRACTOR SHALL TAKE ALL NECESSARY AND PROPER PRECAUTIONS TO PROTECT ADJACENT PROPERTIES FROM ANY AND ALL DAMAGE THAT MAY OCCUR FROM RUNOFF AND/OR DEPOSITION OF DEBRIS RESULTING FROM ANY AND ALL WORK IN CONNECTION WITH SITE CONSTRUCTION. THE CONTRACTOR, AND EACH SUBCONTRACTOR, SHALL BE RESPONSIBLE FOR THE CLEAN-UP AND REMOVAL FROM THE JOB-SITE ANY TRASH OR EXCESS MATERIAL CREATED BY THE PERFORMANCE OF THEIR WORK. SUCH MATERIAL SHALL BE PLACED IN A DUMPSTER OR SIMILAR DEVICE PROVIDED BY THE CONTRACTOR OR TRANSPORTED FROM THE JOB-SITE.
4. RECORDED AND/OR FILED SURVEY MONUMENTS EXIST WITHIN THE LIMITS OF THIS PROJECT. IT IS THE CONTRACTOR'S RESPONSIBILITY TO PROTECT AND/OR HAVE ANY MONUMENTS DISTURBED, DESTROYED OR REMOVED DURING CONSTRUCTION, REESTABLISHED AND RE-MONUMENTED BY A PROFESSIONAL LAND SURVEYOR IN ACCORDANCE WITH IDAPA 55-1613. THE COST TO REESTABLISH SURVEY MONUMENTS DISTURBED DURING CONSTRUCTION SHALL BE THE CONTRACTOR'S RESPONSIBILITY.
5. CONTRACTOR SHALL PROVIDE ALL NECESSARY HORIZONTAL AND VERTICAL TRANSITION BETWEEN NEW CONSTRUCTION AND EXISTING SURFACES TO PROVIDE FOR PROPER DRAINAGE AND INGRESS AND EGRESS TO SAID CONSTRUCTION. CONTRACTOR SHALL REMOVE AND SORT ALL ON-SITE EXCAVATED NATIVE MATERIAL AND USE SUITABLE MATERIAL WHERE DESIGNATED ON THE CONSTRUCTION PLANS AS REQUIRING FILL MATERIAL. FILL SHALL BE PLACED AND COMPACTED BY METHODS APPROVED BY THE CITY AND APPROVED BY THE DESIGN ENGINEER. ALL STRIPPINGS NOT SUITABLE FOR FILL MATERIAL ON LOTS OR ROADWAYS SHALL BE USED AS DIRECTED BY THE ENGINEER OR DISCARDED OFF-SITE AT THE CONTRACTOR'S EXPENSE.
7. EXISTING UTILITIES ARE LOCATED ON THE PLANS FOR THE CONVENIENCE OF THE CONTRACTOR ONLY. THE CONTRACTOR SHALL BEAR FULL RESPONSIBILITY FOR THE PROTECTION OF UTILITIES AND THE ENGINEER BEARS NO RESPONSIBILITY FOR UTILITIES NOT SHOWN ON THE PLANS OR NOT IN THE LOCATION SHOWN ON THE PLANS. THIS INCLUDES ALL SERVICE LATERALS OF ANY KIND.
8. POWER/LIGHT POLES AND/OR OTHER EXISTING FACILITIES NOT IN PROPER LOCATION BASED ON PROPOSED IMPROVEMENTS SHALL BE VERIFIED PRIOR TO COMMENCING WORK.
9. AFFECTED UTILITY COMPANIES SHALL BE NOTIFIED AT LEAST TWO (2) WORKING DAYS PRIOR TO COMMENCEMENT OF CONSTRUCTION. CALL "DIGLINE" 48 HOURS PRIOR TO COMMENCING WORK.
10. MODIFICATIONS OF EXISTING UTILITIES SHALL CONFORM TO ALL APPLICABLE STANDARDS AND SPECIFICATIONS.
11. THE CONTRACTOR SHALL TAKE REASONABLE MEASURES TO PROTECT EXIST. IMPROVEMENTS FROM DAMAGE AND ALL SUCH IMPROVEMENTS DAMAGED BY THE CONTRACTOR'S OPERATIONS SHALL BE REPAIRED TO THE ENGINEER'S SATISFACTION AT THE EXPENSE OF THE CONTRACTOR.
12. ALL CHANGES REQUIRE APPROVAL BY THE PROJECT ENGINEER AND THE CITY ENGINEER. THE ENGINEER TAKES NO RESPONSIBILITY FOR ANY DEVIATIONS FROM THESE PLANS UNLESS AUTHORIZED, IN WRITING, BY THE ENGINEER.
13. IDAHO CODE 39-118 REQUIRES IDAHO DEPT. OF ENVIRONMENTAL QUALITY (DEQ) APPROVAL PRIOR TO CONSTRUCTION. IT IS THE CONTRACTOR'S RESPONSIBILITY TO INSURE COMPLIANCE.
14. IT IS THE CONTRACTOR'S RESPONSIBILITY TO FILL OUT AND SUBMIT A NOTICE OF INTENT (NOI) TO IDAHO DEQ AND HAVE A COPY OF THE POLLUTION PREVENTION PLAN AVAILABLE AT THE JOBSITE PRIOR TO CONSTRUCTION. CONTRACTOR TO CONTACT DEQ TWIN FALLS REGIONAL OFFICE AT 208-736-2190 FOR SUBMITTAL. CONTRACTOR TO SUBMIT COPIES OF DOCUMENTS TO THE CITY OF KIMBERLY.
15. DEVELOPER WILL PROVIDE ONE SET OF CONSTRUCTION STAKES ONLY. ANY SUBSEQUENT STAKING & COSTS INCURRED WILL BE THE RESPONSIBILITY OF THE CONTRACTOR.
16. TRAFFIC CONTROL & SIGNAGE FOR SUCH SHALL BE INCIDENTAL TO THE CONTRACT AND BE THE RESPONSIBILITY OF THE CONTRACTOR. THE CONTRACTOR SHALL SUBMIT A TRAFFIC CONTROL PLAN TO THE PROJECT ENGINEER PRIOR TO COMMENCING WORK.

ABBREVIATIONS:

A	AREA	PC	POINT OF CURVATURE
AB	AS-BUILT	PI	POINT OF INTERSECTION
ADD'L	ADDITIONAL	PIRR or PI	PRESSURE IRRIGATION
APPR. A.A	APPROACH	POC	POINT ON CURVE
BM	BENCH MARK	PT	POINT OF TANGENCY
CB	CATCH BASIN	REQ'D	REQUIRED
CBU	CLUSTER BOX UNIT	ROW OR R/W	RIGHT OF WAY
CF	CUBIC FEET	RP	RADIUS POINT
CL or c	CENTER LINE	RT	RIGHT
CONST	CONSTRUCT	RW	RESILIENT WEDGE
COT'F	CITY OF TWIN FALLS	S	SLOPE
CY	CUBIC YARD	SD	STORM SEWER
DW or D/W	DRIVEWAY	SF	SQUARE FOOT
DWG	DRAWING	SS	SANITARY SEWER/SEWER SERVICE
EA or EOA	EDGE OF ASPHALT	STA	STATION
EL or ELEV	ELEVATION	STD	STANDARD
FG	FINISHED GRADE	TA	TOP OF ASPHALT
FHYD or FH	FIRE HYDRANT	TBC, TOC, TC	TOP OF CURB (VERT, HIGHBACK, STD)
FL	FLOW LINE	TBM	TEMPORARY BENCH MARK
FOC	FACE OF CURB	TCC	TOP OF CONCRETE
GB	GRADE BREAK	TFCC	TWIN FALLS CANAL COMPANY
GI or GIRR	GRAVITY IRRIGATION	TRANS	TRANSITION
INT	INTERSECTION	TRC	TOP OF ROLLED CURB
INV	INVERT	TYP	TYPICAL
IRR	IRRIGATION/IRRIGATION SERVICE	U.N.O.	UNLESS NOTED OTHERWISE
ISPMC	IDAHO STANDARDS FOR PUBLIC WORKS CONSTRUCTION	V	VOLUME
LF	LINEAR FOOT	VC	VERTICAL CURVE
LG	LIP OF GUTTER	VG	VALLEY GUTTER
LT	LEFT	VPC	VERTICAL POINT OF CURVATURE
MH	MANHOLE	VPI	VERTICAL POINT OF INTERSECTION
NG	NATURAL GROUND	VPT	VERTICAL POINT OF TANGENCY
NTS	NOT TO SCALE	WL	WATERLINE
		WM	WATER METER

Construction Drawings
For
Kimberly School District
Kimberly, Idaho
2025

SHEET INDEX:

DESCRIPTION	SHEET NO.
CIVIL NOTES	C0.01
AREA 1 SITE PLAN	C1.01
AREA 2 SITE PLAN	C1.02
AREA 3 SITE PLAN	C1.03
AREA 4 SITE PLAN	C1.04
AREA 5 SITE PLAN	C1.05
AREA 5B SITE PLAN	C1.06
SITE DETAILS	C5.01
SITE DETAILS	C5.02

DRAINAGE CALCULATIONS

Drainage Runoff Factors:	=	Vh=(A)2.2/12(ROF)
Impervious Areas	=	0.95
Undeveloped/Farm Areas	=	-0.35
Landscape Areas	=	0.25

Dry-Well Voids = 40%

Area 1
No change. Reconstruction of existing surfaces only

Area 2
No change. Reconstruction of existing surfaces only

Area 3
No change. Reconstruction of existing surfaces only

Area 4
Impervious: 43,000 sf x 2.2/12 x 0.95 = 7,489cf
Area 4 Dry-Well: 4,100 sf x 4.6 ft x 0.4 = 7,544cf

Area 5
No change. Reconstruction of existing surfaces only

Area 5B
Impervious: 70ft x 168 ft x 2.2/12 x 0.95 = 2,048cf
Area 4 Dry-Well: 24 ft x 81 ft x 2.7 ft x 0.4 = 2,100cf

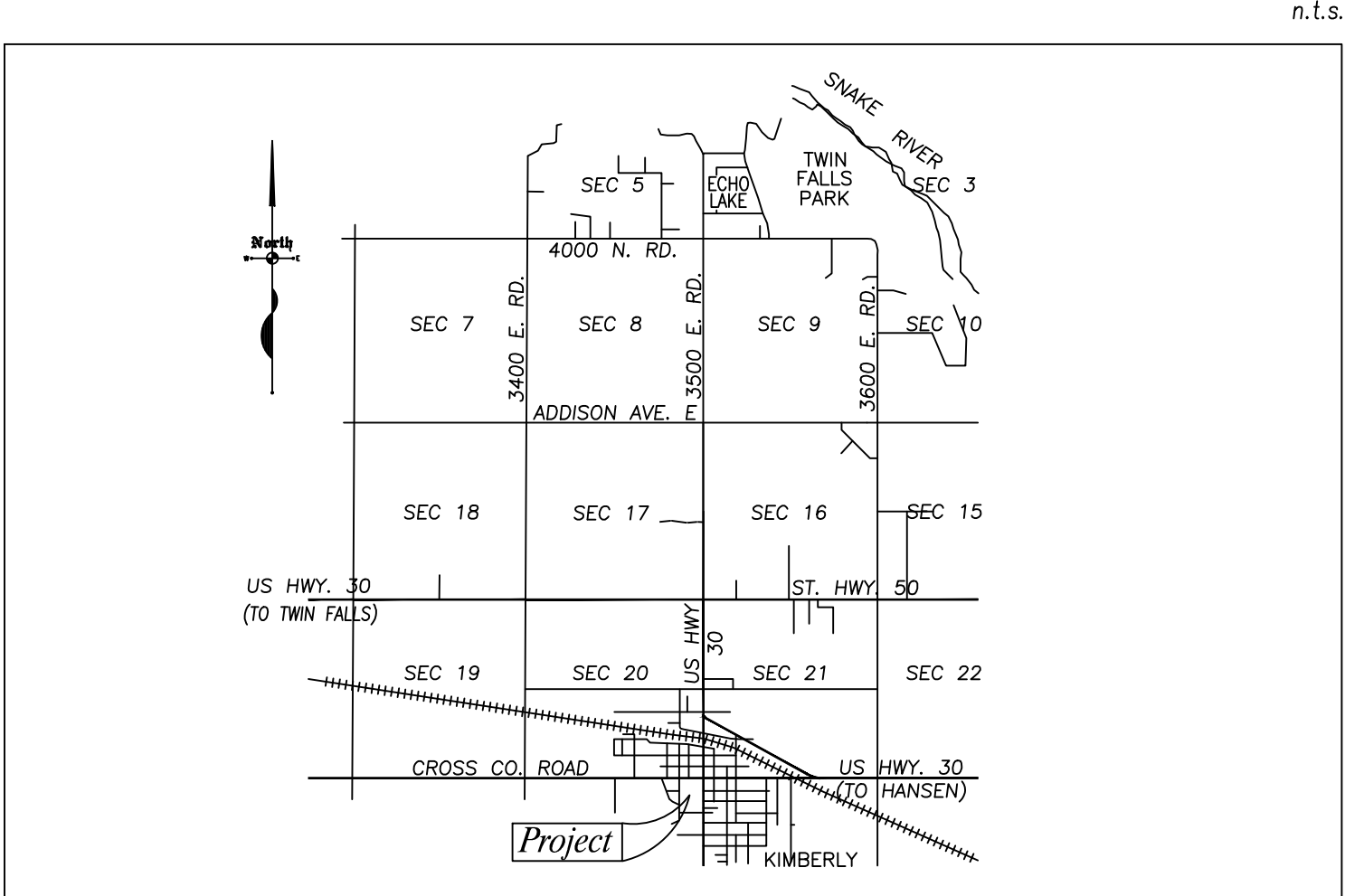
TOPOGRAPHIC LEGEND:

	PROPOSED	EXISTING
CATCH BASIN	■	■
PRESSURE IRRIGATION METER	⊙	⊙
IRRIGATION VALVE	○	⊗
IRRIGATION AIR INJECTION ASSEMBLY	⊙	⊙
IRRIGATION BLOW-OFF ASSEMBLY	⊙	⊙
SEWER MANHOLE	⊙	⊙
CLEAN OUT	○	⊙
WATER METER	⊙	⊙
FIRE HYDRANT	⊙	⊙
WATER VALVE	⊙	⊙
LIGHT POLE	⊙	⊙
POWER POLE	⊙	⊙
TELEPHONE RISER	⊙	⊙
MAIL BOX	⊙	⊙
DRAINAGE FLOW ARROW	➔	➔
BUSH / SHRUB	⊙	⊙
SANITARY SEWER LINE	SS ➔	SS
STORM DRAIN LINE	SD ➔	SD
WATER LINE	W ➔	W
GRAVITY IRRIGATION LINE	GI ➔	GI
PRESSURE IRRIGATION LINE	PI ➔	PI
TELEPHONE LINE	T ➔	T
FENCELINE	x x x	x x x
EDGE OF ASPHALT	_____	EA _____
EDGE OF GRAVEL	_____	EG _____
VERTICAL CURB AND GUTTER	=====	=====
ROLLED CURB AND GUTTER	=====	=====
CONCRETE SIDEWALK	=====	=====
BUILDING FOOTPRINT		□
EXISTING GROUND CONTOUR		- - - - -3711 - - - - -

BOUNDARY LEGEND:

SURVEY BOUNDARY LINE	=====
SECTION LINE	=====
SUBDIVISIONAL SECTION LINE	=====
PROPOSED EASEMENT LINE	-----
ADJACENT PROPERTY LINE	-----
CENTERLINE OF STREET	=====
PLATTED LOT LINE	=====

VICINITY SKETCH:



DEPARTMENT OF ENVIRONMENTAL QUALITY APPROVAL	CITY APPROVAL
APPROVED	K. Nield
DESIGN	M. Lee
DRAWN	M. Lee
DATE	4/15/2025
SCALE	AS SHOWN
DWG. NO.	C 016-25 TOPO
SHEET	C0.01

EHM Engineers, Inc.
BUILDING THE FUTURE ON A FOUNDATION OF EXCELLENCE

Engineers / Surveyors / Planners
621 North College Road, Suite 100, Twin Falls, Idaho 83301
P (208) 734-4888 fax (208) 734-6049 web: ehminc.com

TITLE SHEET
for
KIMBERLY SCHOOL DISTRICT

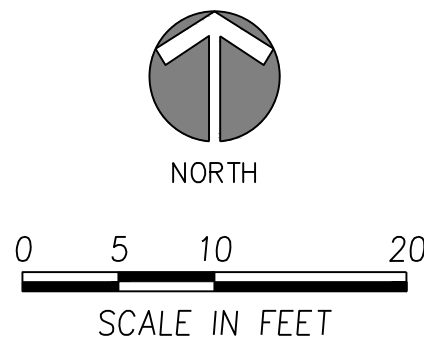
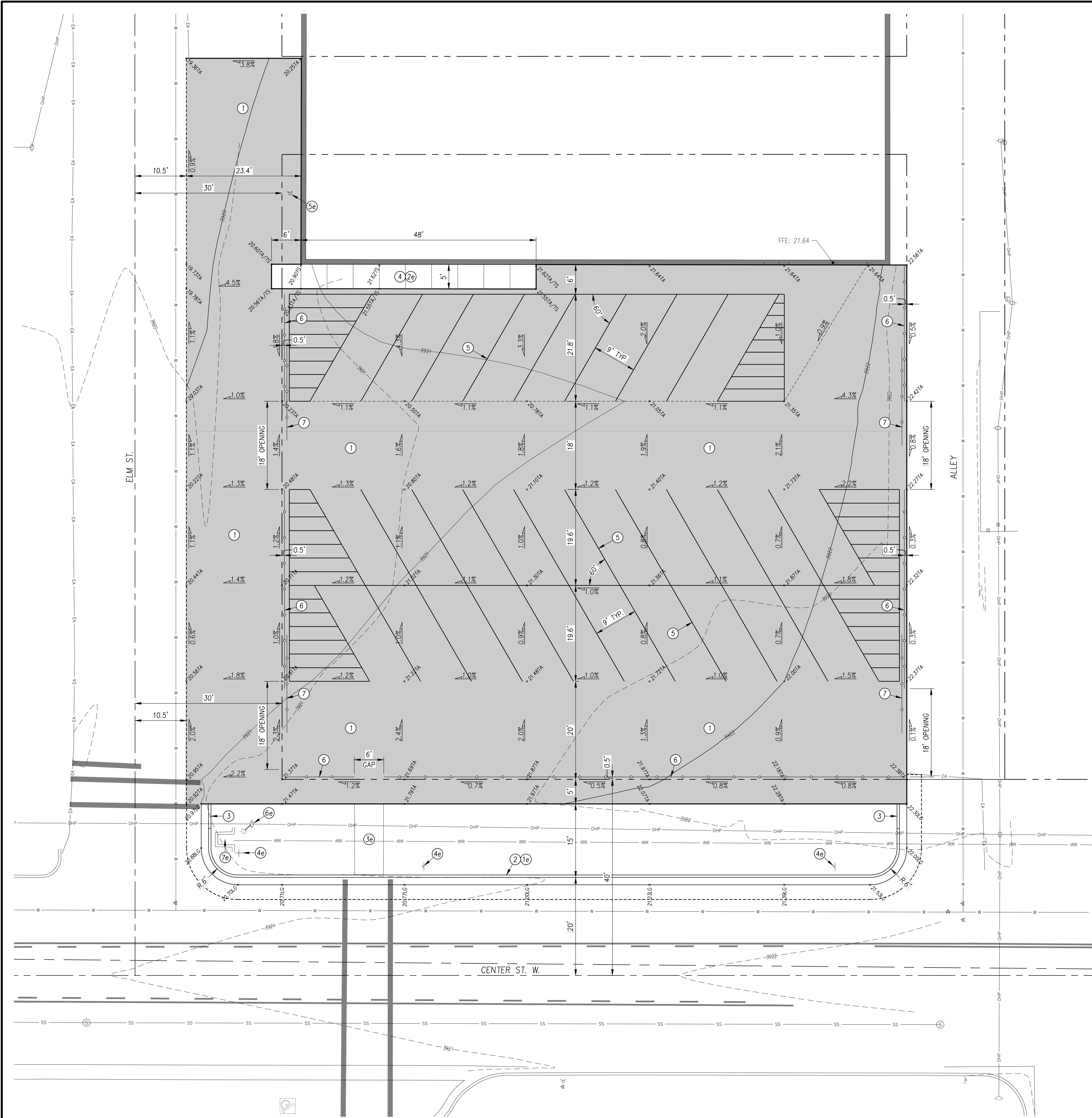
REVISIONS

DO NOT SCALE DRAWINGS
CONTRACTOR SHALL VERIFY ALL CONDITIONS AND DIMENSIONS AT THE JOB SITE AND NOTIFY THE ENGINEER OF ANY DIMENSIONAL ERRORS, OMISSIONS, OR DISCREPANCIES BEFORE BEGINNING OR FABRICATING ANY WORK.

STAMP

PROFESSIONAL ENGINEER
LICENSED
17866
STATE OF IDAHO
KAHLER WIELD

APPROVED K. Nield
DESIGN M. Lee
DRAWN M. Lee
DATE 4/15/2025
SCALE AS SHOWN
DWG. NO. C 016-25 TOPO
SHEET C0.01



- GENERAL SITE NOTES:**
1. ANY CURB RADI ON THE SITE THAT DOES NOT HAVE A DIMENSION SHALL HAVE A RADIUS OF 4 FT. UNLESS DIRECTED OTHERWISE.
 2. GRADING ELEVATION POINTS THAT DO NOT FALL ON A DIMENSIONED FEATURE ARE ON A 25 FT. SPACING.
 3. ALL UTILITIES SHALL BE RETAINED & PROTECTED UNLESS SPECIFICALLY NOTED FOR REMOVAL, ADJUSTMENT, OR RELOCATION.

- AREA 1 - SITE KEY NOTES:**
- 1e REMOVE EXISTING CURB & GUTTER
 - 2e REMOVE EXISTING CONCRETE SIDEWALK
 - 3e RETAIN & PROTECT EXISTING CONCRETE SIDEWALK
 - 4e RETAIN & PROTECT EXISTING SIGN
 - 5e RETAIN & PROTECT EXISTING GAS METER
 - 6e RETAIN & PROTECT EXISTING POWER POLE
 - 7e RETAIN & PROTECT EXISTING IRRIGATION STRUCTURE
 - 1 CONSTRUCT ASPHALT PAVEMENT SECTION, PER DET. 1/C5.01
 - 2 CONSTRUCT 6" VERTICAL CURB & GUTTER, PER DET. 3/C5.01
 - 3 CONSTRUCT CURB TERMINUS, PER ISPCW SD-707
 - 4 CONSTRUCT CONCRETE SIDEWALK, PER DET. 6/C5.01
 - 5 4" WHITE PAVEMENT MARKINGS, TYP.
 - 6 INSTALL 4' CHAIN LINK FENCE
 - 7 INSTALL CHAIN LINK SLIDE GATE, 18' OPENING

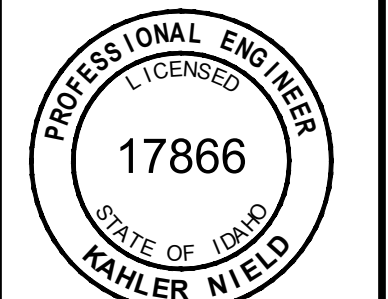
EHM Engineers, Inc.
BUILDING THE FUTURE ON A FOUNDATION OF EXCELLENCE
Engineers / Surveyors / Planners
621 North College Road, Suite 100 Twin Falls, Idaho 83301
p (208)-734-4888 fax (208)-734-6049 web: elm-inc.com

AREA 1 SITE PLAN
for
KIMBERLY SCHOOL DISTRICT

REVISIONS

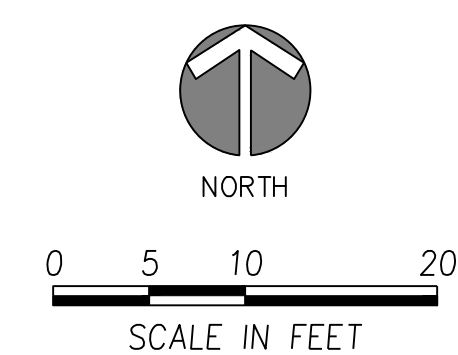
DO NOT SCALE DRAWINGS
CONTRACTOR SHALL VERIFY ALL
CONDITIONS AND DIMENSIONS AT
THE JOB SITE AND NOTIFY THE
ENGINEER OF ANY DIMENSIONAL
ERRORS, OMISSIONS, OR DIS-
CREPANCIES BEFORE BEGINNING
OR FABRICATING ANY WORK.

STAMP



APPROVED	K. Nield
DESIGN	M. Lee
DRAWN	M. Lee
DATE	4/15/2025
SCALE	AS SHOWN
DWG. NO.	C 016-25 TOPO
SHEET	

C1.01



1. ANY CURB RADII ON THE SITE THAT DOES NOT HAVE A DIMENSION SHALL HAVE A RADIUS OF 4 FT. UNLESS DIRECTED OTHERWISE.
2. GRADING ELEVATION POINTS THAT DO NOT FALL ON A DIMENSIONED FEATURE ARE ON A 25 FT. SPACING.
3. ALL UTILITIES SHALL BE RETAINED & PROTECTED UNLESS SPECIFICALLY NOTED FOR REMOVAL, ADJUSTMENT, OR RELOCATION.

- 1e REMOVE EXISTING CONCRETE SIDEWALK
- 2e RETAIN & PROTECT EXISTING CONCRETE SIDEWALK
- 3e RETAIN & PROTECT EXISTING SIGN
- 4e REMOVE & RELOCATE EXISTING ADA PARKING SIGN
(SIGN SHOWN IN NEW LOCATION)
- 5e RETAIN & PROTECT EXISTING WATER METER
- 6e RETAIN & PROTECT EXISTING POWER POLE
- 7e RETAIN & PROTECT EXISTING GUY ANCHOR
- 8e RETAIN & PROTECT EXISTING CHAIN LINK FENCE
- 9e REMOVE EXISTING CHAIN LINK FABRIC TO CONSTRUCT SECTION
AROUND EXISTING POLES AND RE-INSTALL FABRIC AFTER CONSTRUCTION
- 10e REMOVE EXISTING CHAIN LINK FENCE
- 1 CONSTRUCT ASPHALT PAVEMENT SECTION, PER DET. 1/C5.01
- 2 PAINTED ACCESSIBLE PARKING MARKINGS, PER DET. 7/C5.01
- 3 4" WHITE PAVEMENT MARKINGS, TYP.
- 4 INSTALL CONCRETE PARKING BUMPER BLOCKS



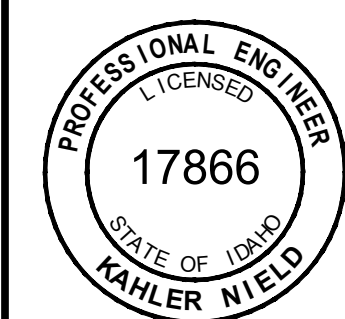
Engineers / Surveyors / Planners
521 North College Road, Suite 100 Twin Falls, Idaho 83301
p (208)-734-4888 fax (208)-734-6049 web: ehmc.com

AREA 2 SITE PLAN
for
KIMBERLY SCHOOL DISTRICT

REVISIONS

DO NOT SCALE DRAWINGS
CONTRACTOR SHALL VERIFY ALL
CONDITIONS AND DIMENSIONS AT
THE JOB SITE AND NOTIFY THE
ENGINEER OF ANY DIMENSIONAL
ERRORS, OMISSIONS, OR DIS-
CREPANCIES BEFORE BEGINNING
OR FABRICATING ANY WORK.

STAMP



APPROVED K. Nield

DESIGN	M. Lee
--------	--------

DRAWN M. Lee

DATE 4/15/2025

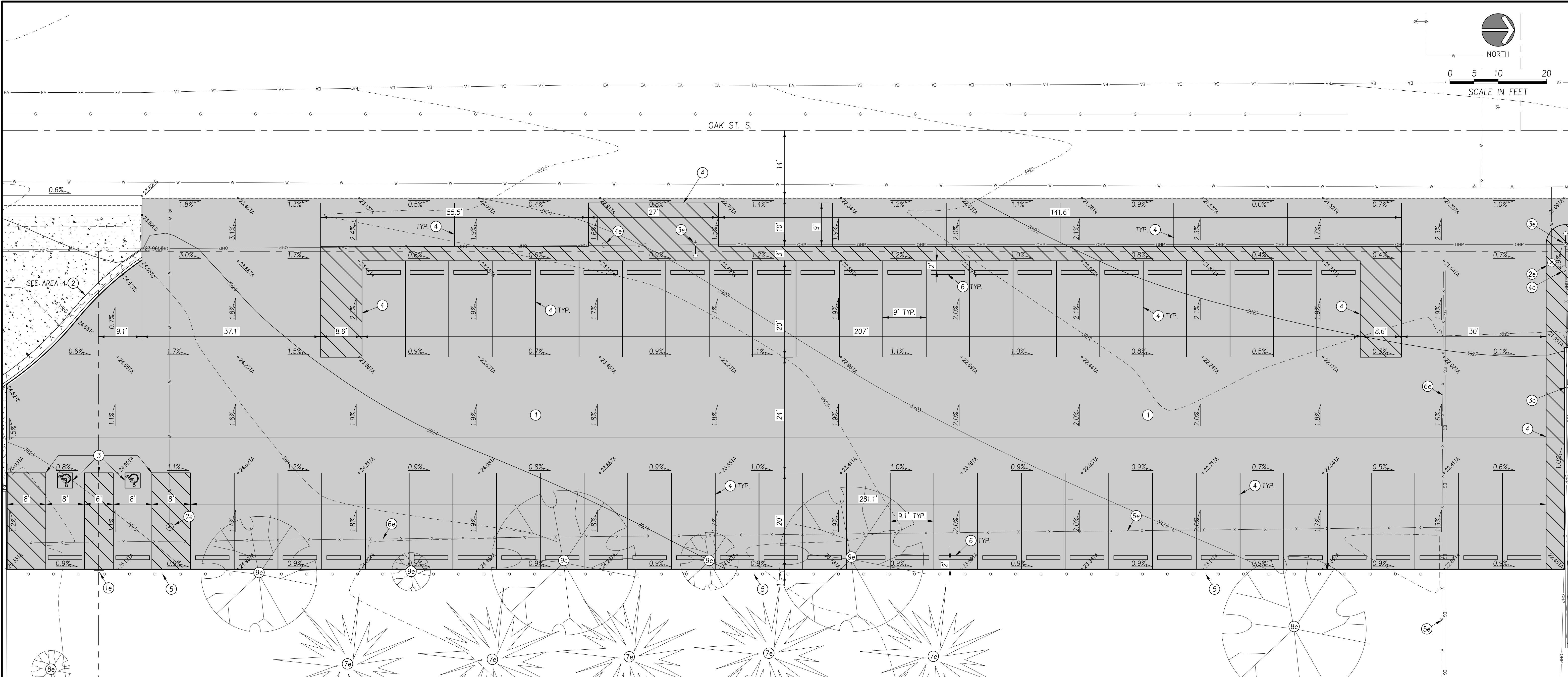
SCALE AS SHOWN

DWG. NO. C. 016-25 TOPO

SHEET

C1.02

C1.02



GENERAL SITE NOTES:

1. ANY CURB RADII ON THE SITE THAT DOES NOT HAVE A DIMENSION SHALL HAVE A RADIUS OF 4 FT. UNLESS DIRECTED OTHERWISE.
2. GRADING ELEVATION POINTS THAT DO NOT FALL ON A DIMENSIONED FEATURE ARE ON A 25 FT. SPACING.
3. ALL UTILITIES SHALL BE RETAINED & PROTECTED UNLESS SPECIFICALLY NOTED FOR REMOVAL, ADJUSTMENT, OR RELOCATION.

- AREA 3 - SITE KEY NOTES:**
- 1e REMOVE & RELOCATE EXISTING ADA PARKING SIGN (SIGN SHOWN IN NEW LOCATION)
 - 2e ADJUST EXISTING WATER MANHOLE TO FINISHED GRADE
 - 3e RETAIN & PROTECT EXISTING POWER POLE
 - 4e RETAIN & PROTECT EXISTING GUY ANCHOR
 - 5e RETAIN & PROTECT EXISTING CHAIN LINK FENCE
 - 6e REMOVE EXISTING 4' CHAIN LINK FENCE
 - 7e RETAIN & PROTECT EXISTING EVERGREEN TREE
 - 8e RETAIN & PROTECT EXITING DECIDUOUS TREE
 - 9e REMOVE EXISTING DECIDUOUS TREE.
 - 1 CONSTRUCT ASPHALT PAVEMENT SECTION, PER DET. 1/C5.01
 - 2 CONSTRUCT 6" RELEASE CURB & GUTTER, PER DET. 4/C5.01
 - 3 PAINTED ACCESSIBLE PARKING MARKINGS, PER DET. 7/C5.01
 - 4 4" WHITE PAVEMENT MARKINGS, TYP.
 - 5 INSTALL 4' CHAIN LINK FENCE
 - 6 INSTALL CONCRETE PARKING BUMPER BLOCKS

EHM Engineers, Inc.
BUILDING THE FUTURE ON A FOUNDATION OF EXCELLENCE

Engineers / Surveyors / Planners
621 North College Road, Suite 100 Twin Falls, Idaho 83301
p (208)-734-4888 fax (208)-734-6049 web: ehminc.com

AREA 3 SITE PLAN
for
KIMBERLY SCHOOL DISTRICT

REVISIONS

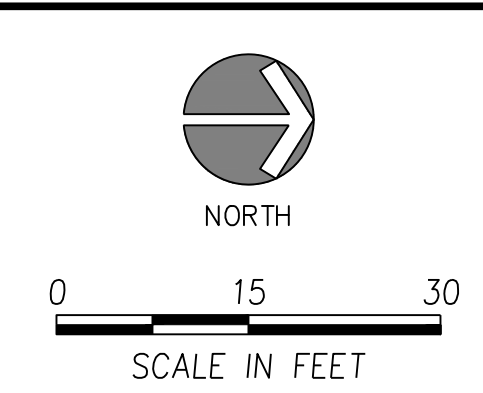
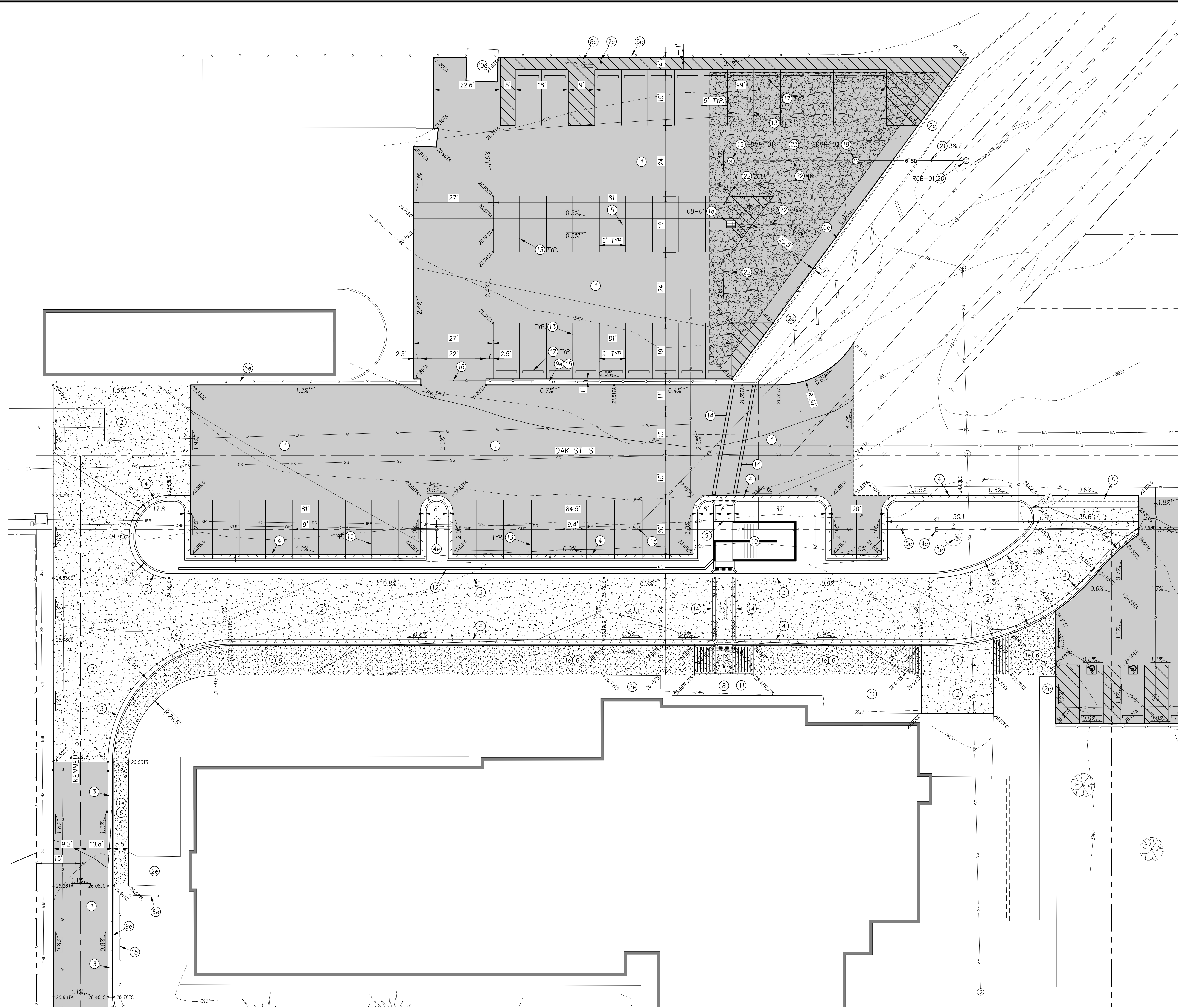
DO NOT SCALE DRAWINGS
CONTRACTOR SHALL VERIFY ALL CONDITIONS AND DIMENSIONS AT THE JOB SITE AND NOTIFY THE ENGINEER OF ANY DIMENSIONAL ERRORS, OMISSIONS, OR DISCREPANCIES BEFORE BEGINNING OR FABRICATING ANY WORK.

STAMP

APPROVED K. Nield
DESIGN M. Lee
DRAWN M. Lee
DATE 4/15/2025
SCALE AS SHOWN
DWG. NO. C 016-25 TOPO
SHEET

PROFESSIONAL ENGINEER
LICENSED
17866
STATE OF IDAHO
KAHLER NIELD

C1.03



- GENERAL SITE NOTES:**
1. ANY CURB RADI ON THE SITE THAT DOES NOT HAVE A DIMENSION SHALL HAVE A RADIUS OF 4 FT. UNLESS DIRECTED OTHERWISE.
 2. GRADING ELEVATION POINTS THAT DO NOT FALL ON A DIMENSIONED FEATURE ARE ON A 25 FT. SPACING.
 3. ALL UTILITIES SHALL BE RETAINED & PROTECTED UNLESS SPECIFICALLY NOTED FOR REMOVAL, ADJUSTMENT, OR RELOCATION.

- AREA 4 - SITE KEY NOTES:**
- 1e REMOVE EXISTING CONCRETE SIDEWALK
 - 2e RETAIN & PROTECT EXISTING CONCRETE SIDEWALK
 - 3e RETAIN & PROTECT EXISTING WATER MANHOLE
 - 4e RETAIN & PROTECT EXISTING POWER POLE
 - 5e RETAIN & PROTECT EXISTING GUY ANCHOR
 - 6e RETAIN & PROTECT EXISTING CHAIN LINK FENCE
 - 7e RETAIN & PROTECT EXISTING FROST FREE HYDRANT
 - 8e RETAIN & PROTECT EXISTING STADIUM LIGHTING
 - 9e REMOVE EXISTING CHAIN LINK FENCE
 - 10e RETAIN & PROTECT EXISTING CONCRETE PAD
 - 11e ADJUST EXISTING IRRIGATION MANHOLE TO FINISHED GRADE
 - 1 CONSTRUCT ASPHALT PAVEMENT SECTION, PER DET. 1/C5.01
 - 2 CONCRETE CONCRETE PAVEMENT SECTION, PER DET. 2/C5.01
 - 3 CONSTRUCT 6" VERTICAL CURB & GUTTER, PER DET. 3/C5.01
 - 4 CONSTRUCT 6" RELEASE CURB & GUTTER, PER DET. 4/C5.01
 - 5 CONSTRUCT 4' VALLEY GUTTER, PER DET. 5/C5.01
 - 6 CONSTRUCT CONCRETE SIDEWALK, PER DET. 6/C5.01
 - 7 CONSTRUCT CONCRETE DRIVEWAY WITH RAMPED SIDEWALK, PER ISPCW SD-710B
 - 8 CONSTRUCT ADA RAMP TYPE 'B', PER DET. 9/C5.01
 - 9 CONSTRUCT ADA RAMP TYPE 'C', PER DET. 10/C5.01
 - 10 CONSTRUCT ADA RAMP, SEE SHIT. C5.02
 - 11 FILL IN LANDSCAPE AREA WITH 4" THICK CONCRETE
 - 12 CONSTRUCT RETAINING WALL, PER DET. 15/C5.01
 - 13 4" WHITE PAVEMENT MARKINGS, TYP.
 - 14 12" WHITE CROSSWALK MARKINGS
 - 15 INSTALL 6" CHAIN LINK FENCE
 - 16 REMOVE EXISTING SWING GATE AND INSTALL CHAIN LINK SLIDE GATE IN EXISTING 22' OPENING
 - 17 INSTALL CONCRETE PARKING BUMPER BLOCKS
 - 18 INSTALL INLET CATCH BASIN TYPE III, PER ISPCW SD-603
GRATE INV. CB-01 3920.65 3916.50
 - 19 INSTALL STORM DRAIN MANHOLE, PER DET. 12/C5.01
RIM INV. SDMH-01 3920.65 3916.50
SDMH-02 3921.00 3915.50 S
3918.00 N
 - 20 INSTALL ROUND CATCH BASIN, PER DET. 13/C5.01
GRATE INV. RCB-01 3918.80 3916.30
 - 21 INSTALL 6" PVC STORM DRAIN PIPE
 - 22 INSTALL 6" PVC PERFORATED STORM DRAIN PIPE, SLOPE = 0.0%
 - 23 CONSTRUCT DRY-WELL, PER DET. 14/C5.01
DRY WELL ARE: 4100 SF
TOP EL: 3918.0
BTM EL: 3913.4

EHM Engineers, Inc.
BUILDING THE FUTURE ON A FOUNDATION OF EXCELLENCE
Engineers / Surveyors / Planners
621 North College Road, Suite 100 Twin Falls, Idaho 83301
p (208)-734-4888 fax (208)-734-6049 web: elm-inc.com

AREA 4 SITE PLAN
for
KIMBERLY SCHOOL DISTRICT

REVISIONS

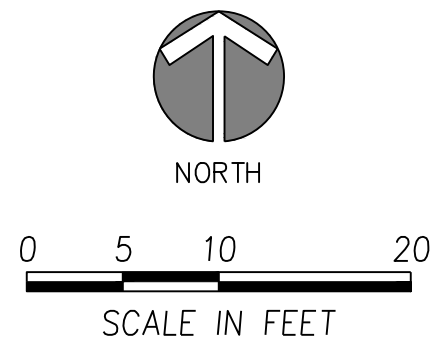
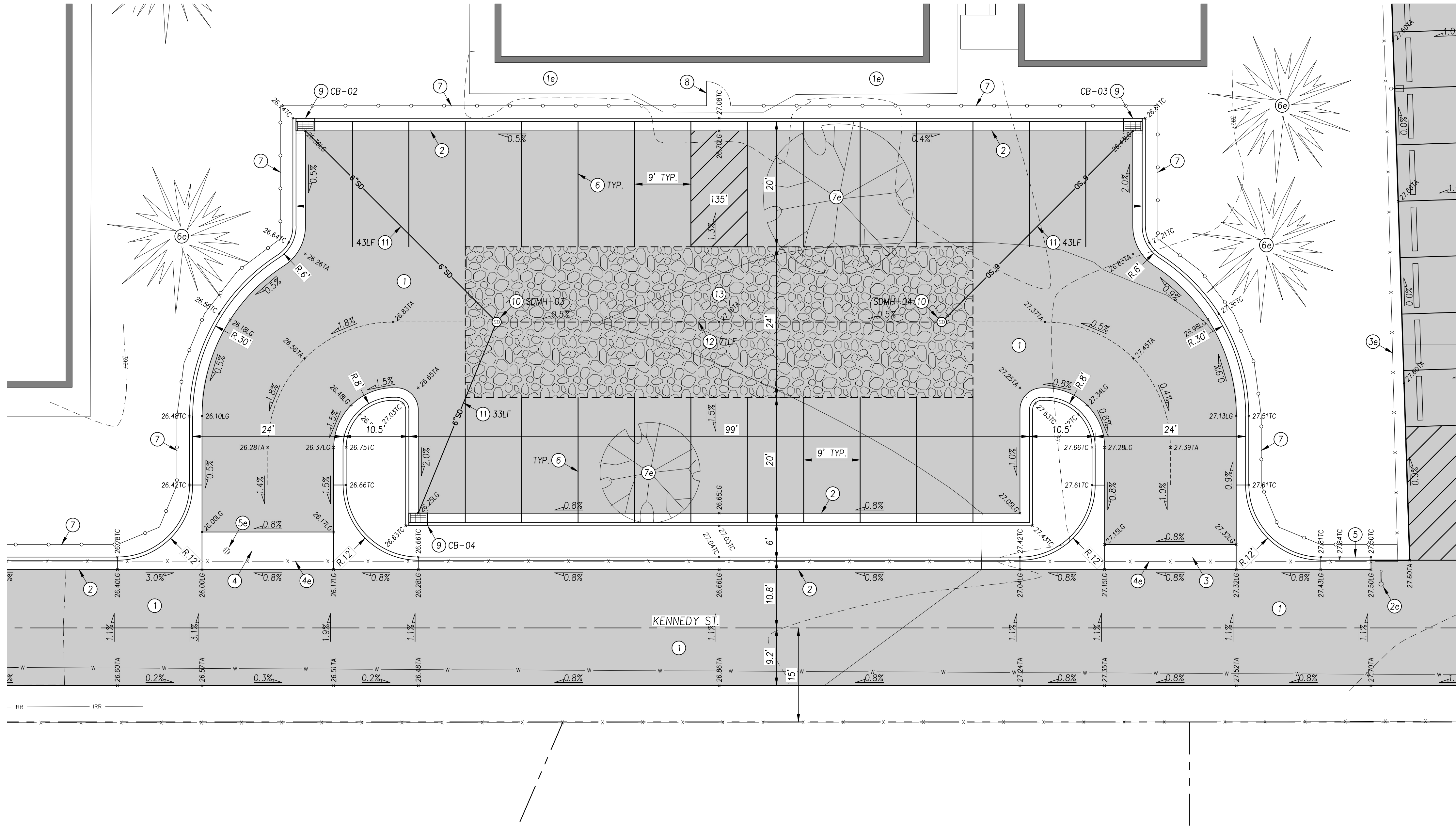
--	--

DO NOT SCALE DRAWINGS
CONTRACTOR SHALL VERIFY ALL
CONDITIONS AND DIMENSIONS AT
THE JOB SITE AND NOTIFY THE
ENGINEER OF ANY DIMENSIONAL
ERRORS, OMISSIONS, OR DIS-
CREPANCIES BEFORE BEGINNING
OR FABRICATING ANY WORK.

STAMP

APPROVED	K. Nield
DESIGN	M. Lee
DRAWN	M. Lee
DATE	4/15/2025
SCALE	AS SHOWN
DWG. NO.	C 016-25 TOPO
SHEET	

C1.04



- GENERAL SITE NOTES:
1. ANY CURB RADI ON THE SITE THAT DOES NOT HAVE A DIMENSION SHALL HAVE A RADIUS OF 4 FT. UNLESS DIRECTED OTHERWISE.
 2. GRADING ELEVATION POINTS THAT DO NOT FALL ON A DIMENSIONED FEATURE ARE ON A 25 FT. SPACING.
 3. ALL UTILITIES SHALL BE RETAINED & PROTECTED UNLESS SPECIFICALLY NOTED FOR REMOVAL, ADJUSTMENT, OR RELOCATION.

- AREA 5B - SITE KEY NOTES:
- 1e RETAIN & PROTECT EXISTING CONCRETE SIDEWALK
 - 2e RETAIN & PROTECT EXISTING LIGHT POLE
 - 3e RETAIN & PROTECT EXISTING CHAIN LINK FENCE
 - 4e REMOVE EXISTING CHAIN LINK FENCE
 - 5e ADJUST EXISTING CATCH BASIN TO FINISHED GRADE
 - 6e RETAIN & PROTECT EXISTING EVERGREEN TREE
 - 7e REMOVE EXISTING DECIDUOUS TREE.
 - 1 CONSTRUCT ASPHALT PAVEMENT SECTION, PER DET. 1/C5.01
 - 2 CONSTRUCT 6" VERTICAL CURB & GUTTER, PER DET. 3/C5.01
 - 3 CONSTRUCT 4' VALLEY GUTTER, PER DET. 5/C5.01
 - 4 CONSTRUCT 6' VALLEY GUTTER, PER DET. 5/C5.01
 - 5 CONSTRUCT CURB TERMINUS, PER ISPMC SD-707
 - 6 4" WHITE PAVEMENT MARKINGS, TYP.
 - 7 INSTALL CHAIN LINK FENCE
 - 8 INSTALL 4' CHAIN LINK WALK GATE
 - 9 INSTALL INLET CATCH BASIN TYPE 1, PER ISPMC SD-601
GRATE INV.
CB-02 3926.26 3924.26
CB-03 3926.33 3924.33
CB-04 3926.15 3924.15
 - 10 INSTALL STORM DRAIN MANHOLE, PER DET. 12/C5.01
RIM INV.
SDMH-03 3926.92 3923.80
SDMH-04 3927.28 3923.80
 - 11 INSTALL 6" PVC STORM DRAIN PIPE
 - 12 INSTALL 6" PVC PERFORATED STORM DRAIN PIPE, SLOPE = 0.0%
 - 13 CONSTRUCT DRY-WELL, PER DET. 14/C5.01
DRY WELL: 24' x 81' x 2.7' DEEP
TOP EL: 3925.2
BTM EL: 3922.5

EHM Engineers, Inc.
BUILDING THE FUTURE ON A FOUNDATION OF EXCELLENCE
Engineers / Surveyors / Planners
621 North College Road, Suite 100 Twin Falls, Idaho 83301
p (208)-734-4888 fax (208)-734-6049 web: elm-inc.com

AREA 5B SITE PLAN
for
KIMBERLY SCHOOL DISTRICT

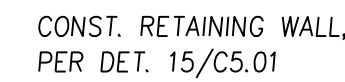
REVISIONS

DO NOT SCALE DRAWINGS
CONTRACTOR SHALL VERIFY ALL
CONDITIONS AND DIMENSIONS AT
THE JOB SITE AND NOTIFY THE
ENGINEER OF ANY DIMENSIONAL
ERRORS, OMISSIONS, OR DIS-
CREPANCIES BEFORE BEGINNING
OR FABRICATING ANY WORK.

STAMP

PROFESSIONAL ENGINEER
LICENSED
17866
STATE OF IDAHO
KAHLER FIELD

APPROVED	K. Nield
DESIGN	M. Lee
DRAWN	M. Lee
DATE	4/15/2025
SCALE	AS SHOWN
DWG. NO.	C 016-25 TOPO
SHEET	



SCALE: $1/4" = 1'-0"$



SCALE: $3/4" = 1'-0"$



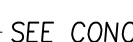
SCALE: 1/2" = 1'-0"



SCALE: 1/2" = 1'-0"



SCALE: 1/2" = 1'-0"



SCALE: 1/2" = 1'-0"



SCALE: 1/2" = 1'-0"

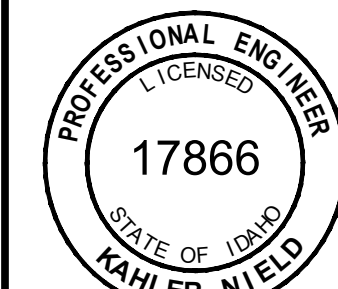
1. IBC 2018, CHAPTER TWO COMPLIANT
2. ANSI A117.1-2009 COMPLIANT
3. RAMP SLOPE, MAX. RISE = 1:12 (VERT/HORZ)
4. CROSS SLOPE, MAX. = 2%
5. STANDARD 2 LINE RAIL FOR COMPONENTS 30" OR LESS FROM GRADE TO WALKING SURFACE OF RAMP, LANDING, OR STAIR.
10. GRASPABLE CONTINUOUS HANDRAIL AT 34" OFF RAMP, PLATFORM, OR STAIR NOSING INSTALL BOTH SIDES OF STAIRS AND RAMP.
11. HANDRAILS TO EXTEND 12" HORIZONTALLY OVER WALKING SURFACE AND RETURN TO WALL OR RAIL COLUMN.

RAMP DETAILS for KIMBERLY SCHOOL DISTRICT

REVISIONS

DO NOT SCALE DRAWING
CONTRACTOR SHALL VERIFY ALL
CONDITIONS AND DIMENSIONS AT
THE JOB SITE AND NOTIFY THE
ENGINEER OF ANY DIMENSIONAL
ERRORS, OMISSIONS, OR DIS-
CREPANCIES BEFORE BEGINNING
OR FABRICATING ANY WORK.

STAM



APPROVED K. Nie

DESIGN	M. Le
--------	-------

DRAWN	M. Le
-------	-------

DATE	4/15/202
------	----------

SCALE AS SHOWN

DWG. NO. C 016-25 TOP

SHEE